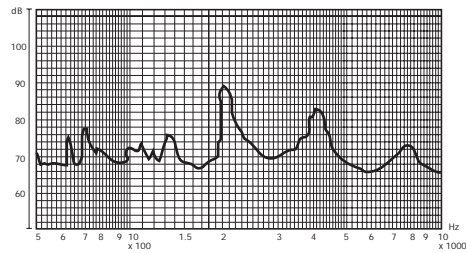


DB111 series Magnetic Transducer

FREQUENCY RESPONSE

[actual curve of type DB111]



applied voltage : 1.5 V. 1/2 duty, square wave
distance for measurement :10cm

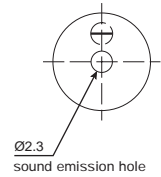
ELECTRICAL SPECIFICATIONS

Model No.		DB111G	DB111	DB111A	DB111GC	DB111GF	DB111F	DB111AF	DB111D
Operating Voltage	(V)	1 - 2	1 - 2	1 - 2	1 - 4	1 - 5	1 - 5	1 - 5	1 - 2
Rated Voltage	(V)	1.5	1.5	1.5	3.6	1.5	1.5	1.5	1.5
▲ Max. Rated Current	(mA.)	30	15	10	60	30	15	10	15
Coil Resistance	(Ω)	16±4.5	42±5	50±7.5	16±4.5	16±4.5	42±5	50±7.5	42±5
*Coil Impedance	(Ω)	40	80	140	40	40	80	140	80
▲ Min Sound Output (dBA/10cm)		85	80	80	85	85	80	80	80
Resonant Frequency	(Hz.)	2048	2048	2048	2048	2048	2048	2048	4096
Operating Temperature	(°C)	-20 ~ +60	-20 ~ +60	-20 ~ +60	-20 ~ +60	-20 ~ +60	-20 ~ +60	-20 ~ +60	-20 ~ +60
Weight	(gm.)	2	2	2	2	2	2	2	2

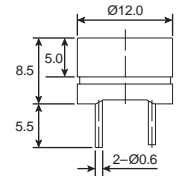
▲ Value applying rated voltage (2048Hz, 1/2 duty, square wave)
* Value applying (2048Hz, sine wave, measuring current 60μA)

DIMENSIONS

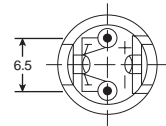
Top View



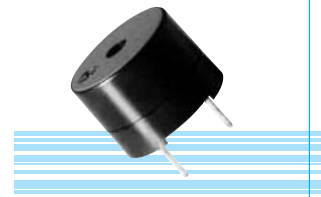
Side View



Bottom View



all dimensions are in mm



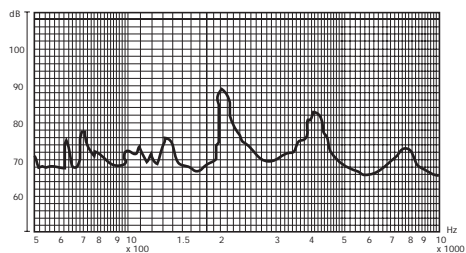
color Black
ABS or Noryl SEI Housing Material
Pin or Leadwire Terminal
Tube Packing is available on request

04

DB112 series Magnetic Transducer

FREQUENCY RESPONSE

[actual curve of type DB112G]



applied voltage : 1.5 V. 1/2 duty, square wave
distance for measurement :10cm

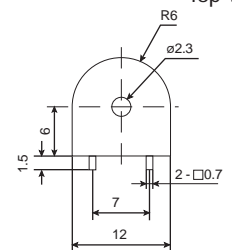
ELECTRICAL SPECIFICATIONS

Model No.		DB112G
Operating Voltage	(V)	1 - 2
Rated Voltage	(V)	1.5
▲ Max. Rated Current	(mA.)	30
Coil Resistance	(Ω)	16±4.5
*Coil Impedance	(Ω)	40
▲ Min Sound Output (dBA/10cm)		85
Resonant Frequency	(Hz.)	2,048
Operating Temperature	(°C)	-20 ~ +60
Weight	(gm.)	2

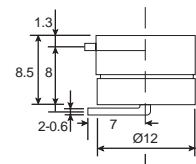
▲ Value applying rated voltage (2048Hz, 1/2 duty, square wave)
* Value applying (2048Hz, sine wave, measuring current 60μA)

DIMENSIONS

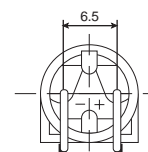
Top View



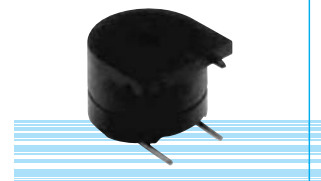
Side View



Bottom View



all dimensions are in mm



color Black
Noryl SEI Housing Material
Pin Terminal