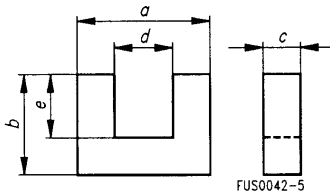


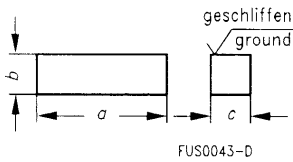
U-/I-/UR-Kerne U/I/UR Cores

U-Kerne werden für den Aufbau von Leistungs-, Impuls- und Hochspannungsübertragern eingesetzt. UU 93/152/... und UI 93/104/... für übertragbare Leistungen >1 kW bei 20 kHz.

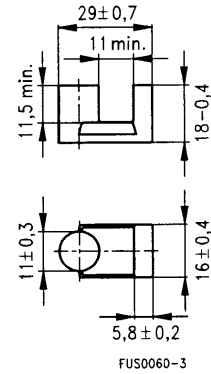
U-Kerne/U cores



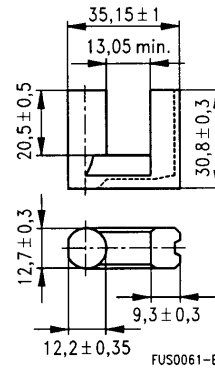
I-Kerne/I cores



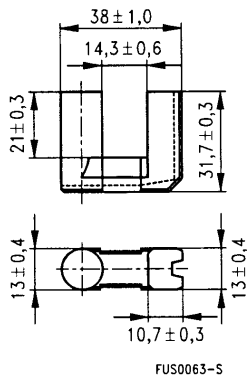
UR 29/18/16



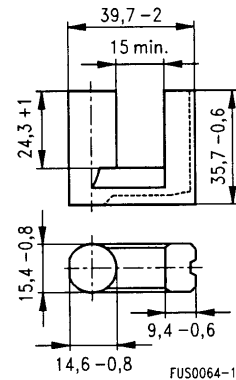
UR 35/31/13



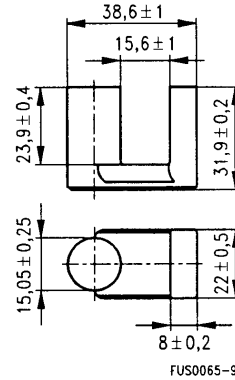
UR 38/32/13



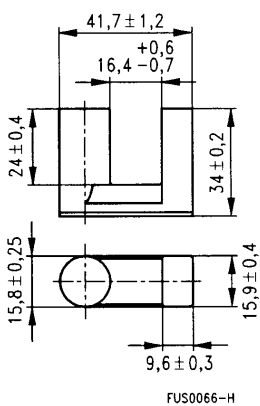
UR 39/35/15



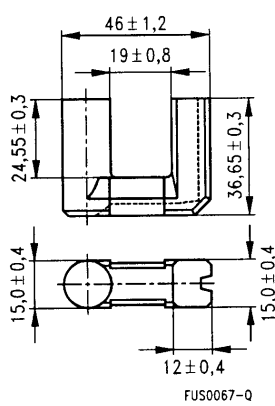
UR 39/32/22



UR 43/34/16



UR 46/37/15



| Typ Type | Hauptmaße (mm) Main dimensions (mm) | | | | |
|--------------------------|--|----------|----------|----------|----------|
| | a | b | c | d | e |
| U 11/9/6 | 10,4±0,5 | 9,3±0,25 | 6,2-0,4 | 4,1±0,2 | 5,7+0,5 |
| U 15/11/6 | 15,2±0,7 | 11,2±0,5 | 6,7-0,5 | 5,2±0,3 | 5,9+0,5 |
| U 17/12/7 | 16,6±0,7 | 11,7-1,0 | 6,7-0,5 | 6,6±0,3 | 5,7+0,7 |
| U 20/16/7 | 20,8±0,6 | 15,9-0,6 | 7,7-0,6 | 6,3±0,3 | 8,0+0,6 |
| U 21/17/12 | 21 ±0,6 | 17 -0,6 | 12 -0,7 | 9 +0,7 | 11 +0,4 |
| U 25/20/13 | 24,8±0,7 | 20,0-1,0 | 13,0-0,5 | 8,2±0,3 | 11,0+0,5 |
| U 26/22/16 | 25,8±0,7 | 22,7-0,7 | 16,0-0,6 | 9,0±0,7 | 13,0+0,4 |
| U 30/26/26 | 30,8±1,2 | 26,4±0,6 | 26,5-0,8 | 10,4±0,4 | 16,0+0,5 |
| U 93/76/16 | 93 ±1,8 | 76 ±0,5 | 16 ±0,5 | 34,6 min | 48 ±0,9 |
| I 93/28/16 | 93 ±1,8 | 28 ±0,5 | 16 ±0,5 | - | - |
| U 93/76/20 | 93 ±1,8 | 76 ±0,5 | 20 ±0,5 | 34,6 min | 48 ±0,9 |
| I 93/28/20 | 93 ±1,8 | 28 ±0,5 | 20 ±0,5 | - | - |
| U 93/76/30 | 93 ±1,8 | 76 ±0,5 | 30 ±0,5 | 34,6 min | 48 ±0,9 |
| I 93/28/30 ³⁾ | 93 ±1,8 | 28 ±0,5 | 30 ±0,5 | - | - |

U cores are used for power, pulse and high-voltage transformers.
 UU 93/152/... and UI 93/104/... for power capacities > 1 kW
 at 20 kHz.



| Kerne Cores | | | | | | | | | | Zubehör Accessories | |
|--------------------------|---|-------------|--------------------------|------------------------------|--------------------------|--|------|------|------|---|------------------------------|
| Typ Type | Magn. Formkenngrößen/Satz Mag. characteristics/set | | | | | Material A_L -Werte (nH) ¹⁾ A_L values (nH) ¹⁾ | | | | Bestellnummer pro Stück Ordering code per item | Spulenkörper Coil formers |
| | $\Sigma I/A$ mm ⁻¹ | l_e mm | A_e mm ² | A_{min} mm ² | V_e mm ³ | N 62 | N 27 | N 53 | N 67 | | |
| U 11/9/6 | 2,11 | 41,5 | 19,7 | – | 820 | | 800 | | | B67366-A1-X27 | |
| U 15/11/6 | 1,5 | 48 | 32 | – | 1540 | | 1200 | | | B67350-A1-X27 | B67350-A1004-T1 |
| U 17/12/7 | 1,66 | 53 | 32 | – | 1700 | | 1300 | | | B67364-G-X27 | |
| U 20/16/7 | 1,24 | 68 | 55 | – | 3740 | | 1600 | | | B67348-A1-X27 | B67348-A1004-T1 |
| U 21/17/12 | 1,22 | 81 | 66,5 | – | 5390 | 1600 | 1650 | | | B67318-G-X162 B67318-G-X127 | |
| U 25/20/13 | 0,82 | 86 | 105 | – | 9030 | | 2500 | | | B67352-A1-X27 | B67352-A1004-T1 |
| U 26/22/16 | 0,75 | 98 | 131 | 129 | 12800 | | 2500 | | | B67355-A1-X27 | |
| U 30/26/26 | 0,45 | 118 | 265 | – | 31300 | | 4400 | | | B67362-A1-X27 | |
| U 93/76/16 ²⁾ | 0,79 | 354 | 448 | – | 159000 | | 2900 | | | B67345-B3-X27 | |
| I 93/28/16 ³⁾ | 0,58 | 258 | 448 | – | 116000 | | 3800 | | | B67345-B4-X27 | |
| U 93/76/20 ²⁾ | 0,63 | 354 | 560 | – | 198000 | | 3600 | | | B67345-B10-X27 | |
| I 93/28/20 ³⁾ | 0,46 | 258 | 560 | – | 144000 | | 4900 | | | B67345-B11-X27 | |
| U 93/76/30 ²⁾ | 0,42 | 354 | 840 | – | 297000 | | 5400 | | | B67345-B1-X27 | B67345-A1000-T1 |
| I 93/28/30 ³⁾ | 0,31 | 258 | 840 | – | 216000 | | 7400 | | | B67345-B2-X27 | |
| UR 29/18/16 | 1,01 | 95 | 94 | 94 | 8930 | | 2000 | 1750 | | B67354-A1-X53 B67354-A1-X67 | |
| UR 35/31/13 | 1,15 | 142 | 120 | 112 | 17600 | 1750 | | 1550 | | B67359-G-X162 B67359-G-X53 B67359-G-X167 | |
| UR 38/32/13 | 1,08 | 148 | 137 | 133 | 20300 | 1850 | | 1650 | | B67313-G-X162 B67313-A1-X153 B67313-G-X167 | |
| UR 39/35/15 | 1,15 | 164 | 143 | 137 | 23500 | 1850 | | 1700 | | B67317-G-X162 B67317-G-X153 B67317-G-X167 | |
| UR 39/32/22 | 0,89 | 158 | 177 | 177 | 28000 | 2400 | | 2150 | | B67312-G-X162 B67312-G-X153 | |
| UR 43/34/16 | 0,98 | 163 | 166 | 153 | 27100 | 2150 | | 1950 | | B67368-G-X162 B67368-G-X153 B67368-G-X167 | |
| UR 46/37/15 | 0,98 | 176 | 180 | 177 | 31700 | 2050 | | 1900 | | B67314-G-X162 B67314-G-X153 B67314-G-X167 | |

¹⁾ A_L -Werte für Kernsätze ohne Luftspalt, A_L -Wert-Toleranz +30/-20%.
 A_L values for ungapped core sets, tolerance of A_L value +30/-20%.
²⁾ Magn. Formkenngrößen und A_L -Wert gelten für einen UU-Kernsatz.
 Magn. characteristics and A_L value apply to an UU core set.

³⁾ Magn. Formkenngrößen und A_L -Wert gelten für einen UI-Kernsatz.
 Magn. characteristics and A_L value apply to an UI core set.