

## 2.11 Interface de transmission RS232 DCE et DTE

Projet : IUT5

Info : [DIV518]

Révision : 2 du 28 juin 2013

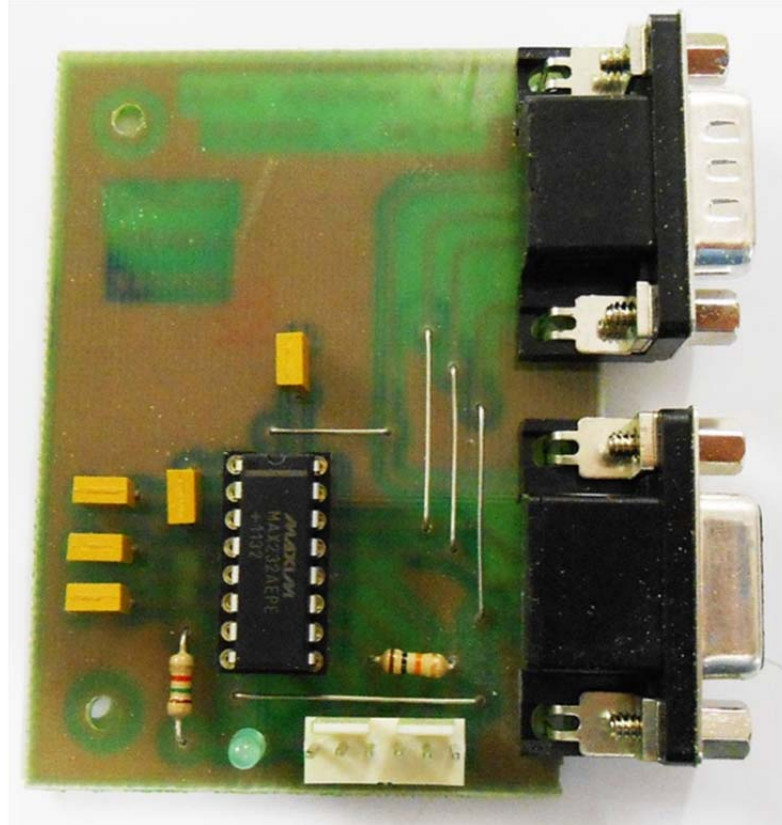


Figure 2.15. Vue de la carte électronique (images-maquettes\CON232-42.jpg).

### 2.11.1 Désignation des composants

Tableau 2.12. Liste des composants (projets-iut5.xls / CON232-2).

No	Quantité	Référence	Désignation	Empreinte
1	5	C1, C2, C3, C4, C5	100nF	CK06
2	1	C6	10uF 6.3V	RADIAL06
3	1	D1	3mm verte	LED03
4	1	JP1	RS232	DSUB-09-F
5	1	JP2	IN-OUT	06PL1
6	1	R1	1.5k	RC04L
7	1	U1	MAX3232	16DIP300L
8	4	VIS1, VIS2, VIS3, VIS4	VISSERIE	M3L

### 2.11.2 Câblage des prises DB9 RS232

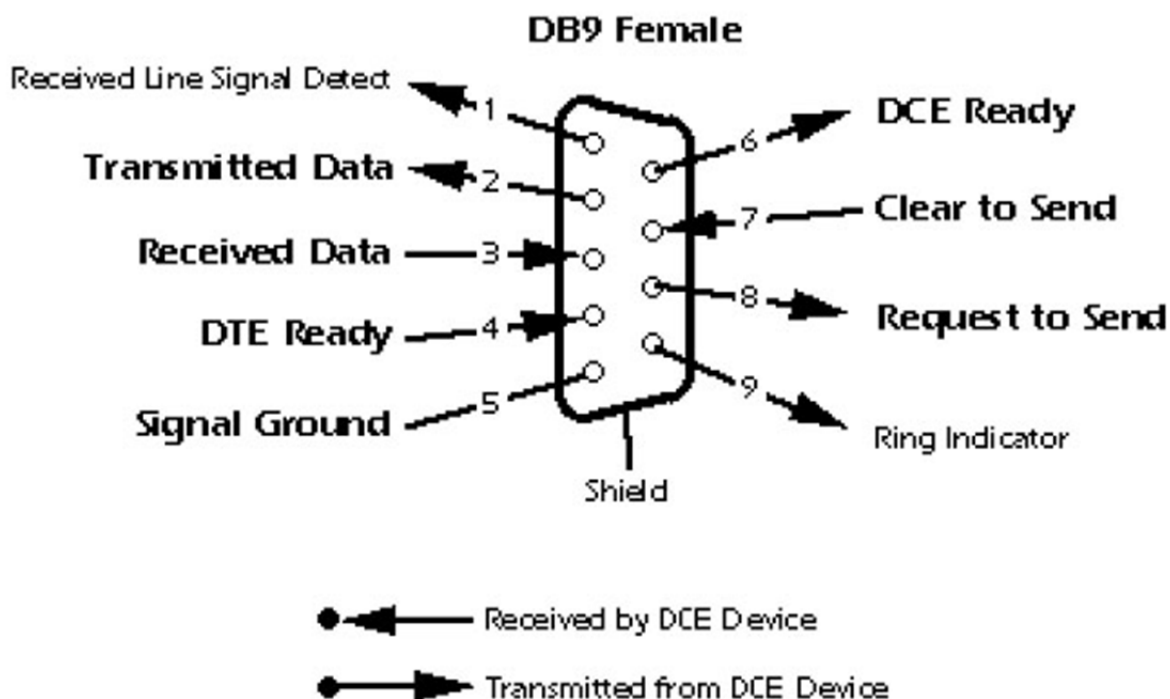


Figure 2.16. Branchement de la prise DB9 femelle DCE MODEM.

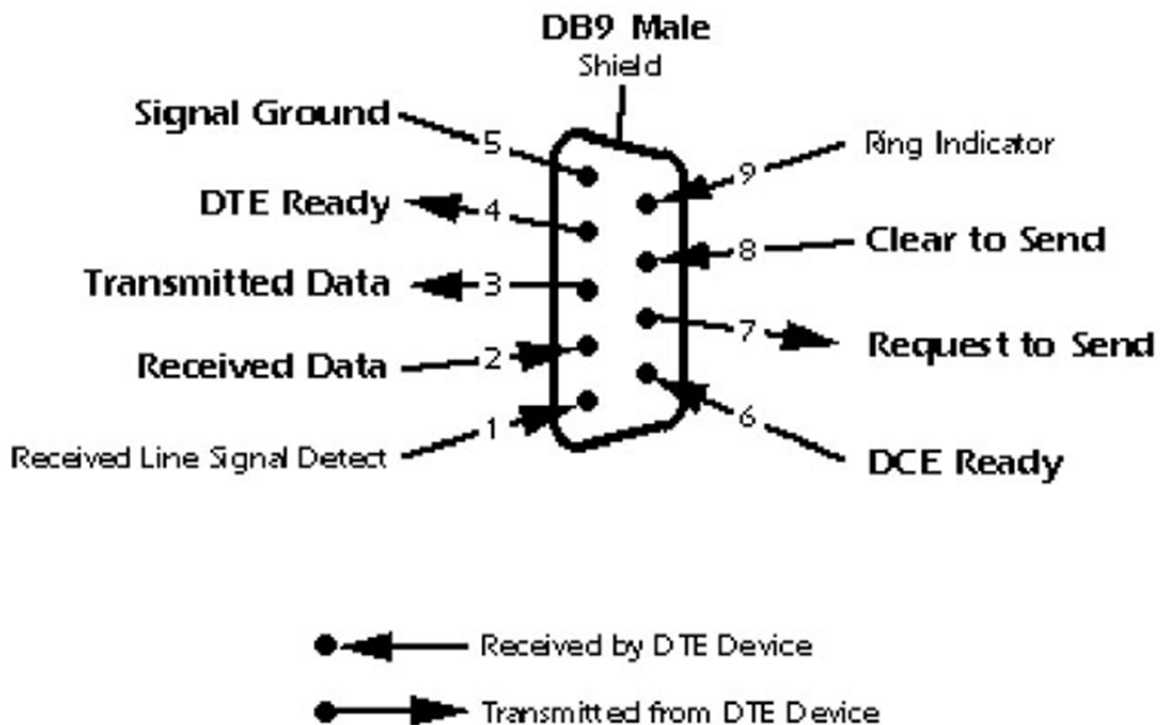
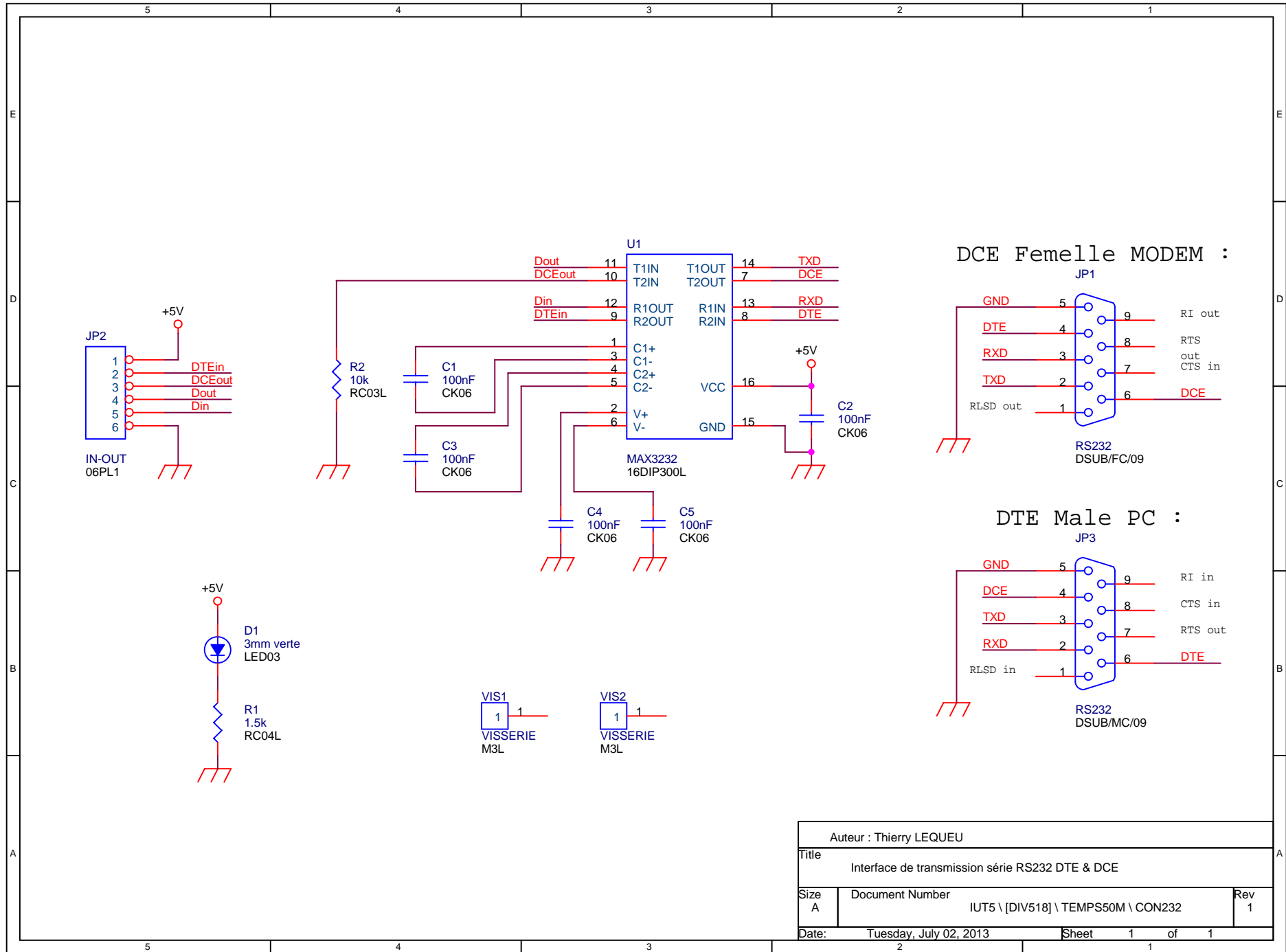
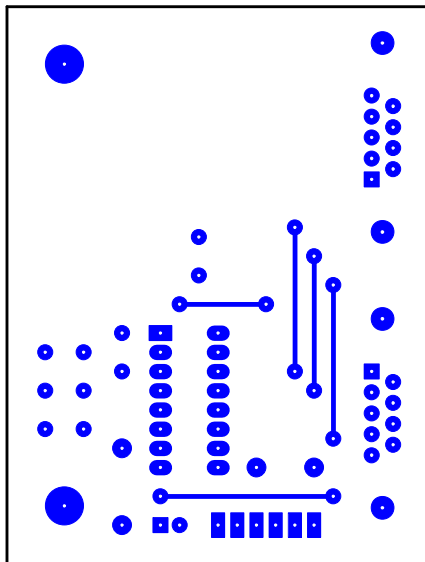


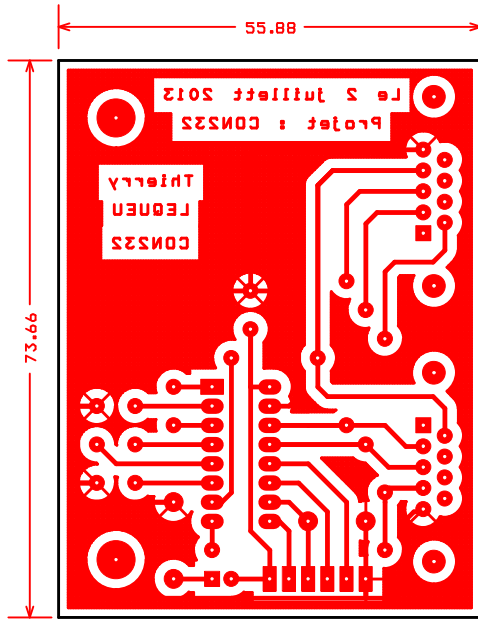
Figure 2.17. Branchement de la prise DB9 male DTE ORDINATEUR.



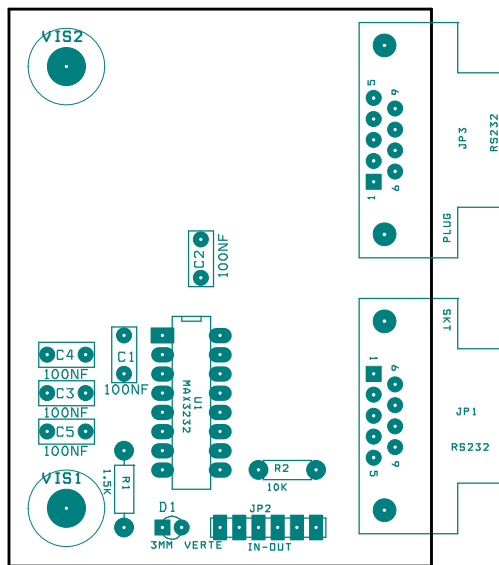
Auteur : Thierry LEQUEU		
Title Interface de transmission série RS232 DTE & DCE		
Size A	Document Number IUT5 \ [DIV518] \ TEMPS50M \ CON232	Rev 1
Date:	Tuesday, July 02, 2013	Sheet 1 of 1



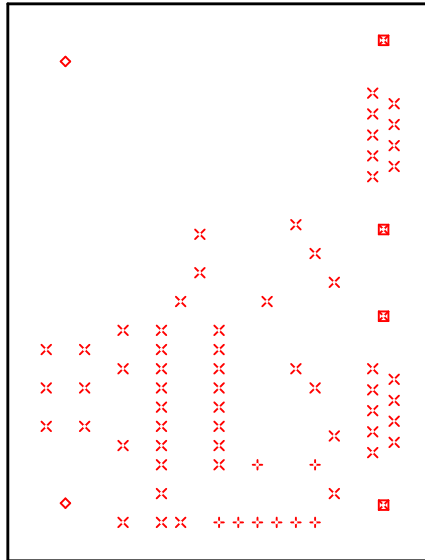
Face TOP



Face BOT



FACE AST



FACE DRD

DRILL CHART				
SYM	DIAM	TOL	QTY	NOTE
x	0.787 mm		58	
+	0.991 mm		8	
◇	1.499 mm		2	
⊠	3.048 mm		4	
TOTAL			72	