

## 5.5 Interface analogique de test

Projet : IUT5

Info : [DIV512]

Révision : 1 du 17 février 2007

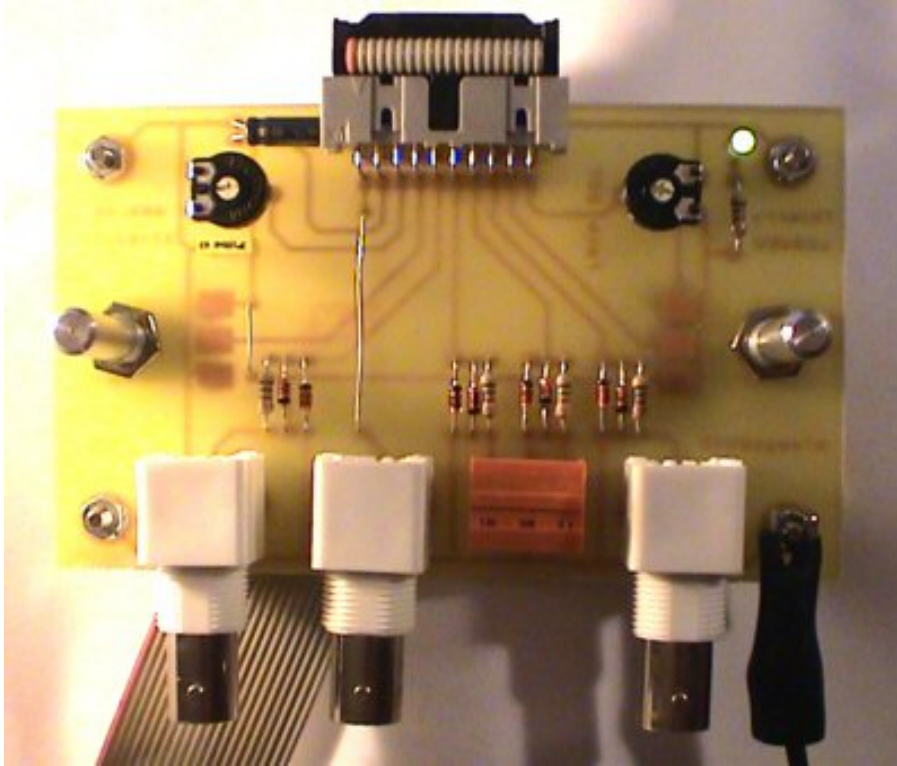
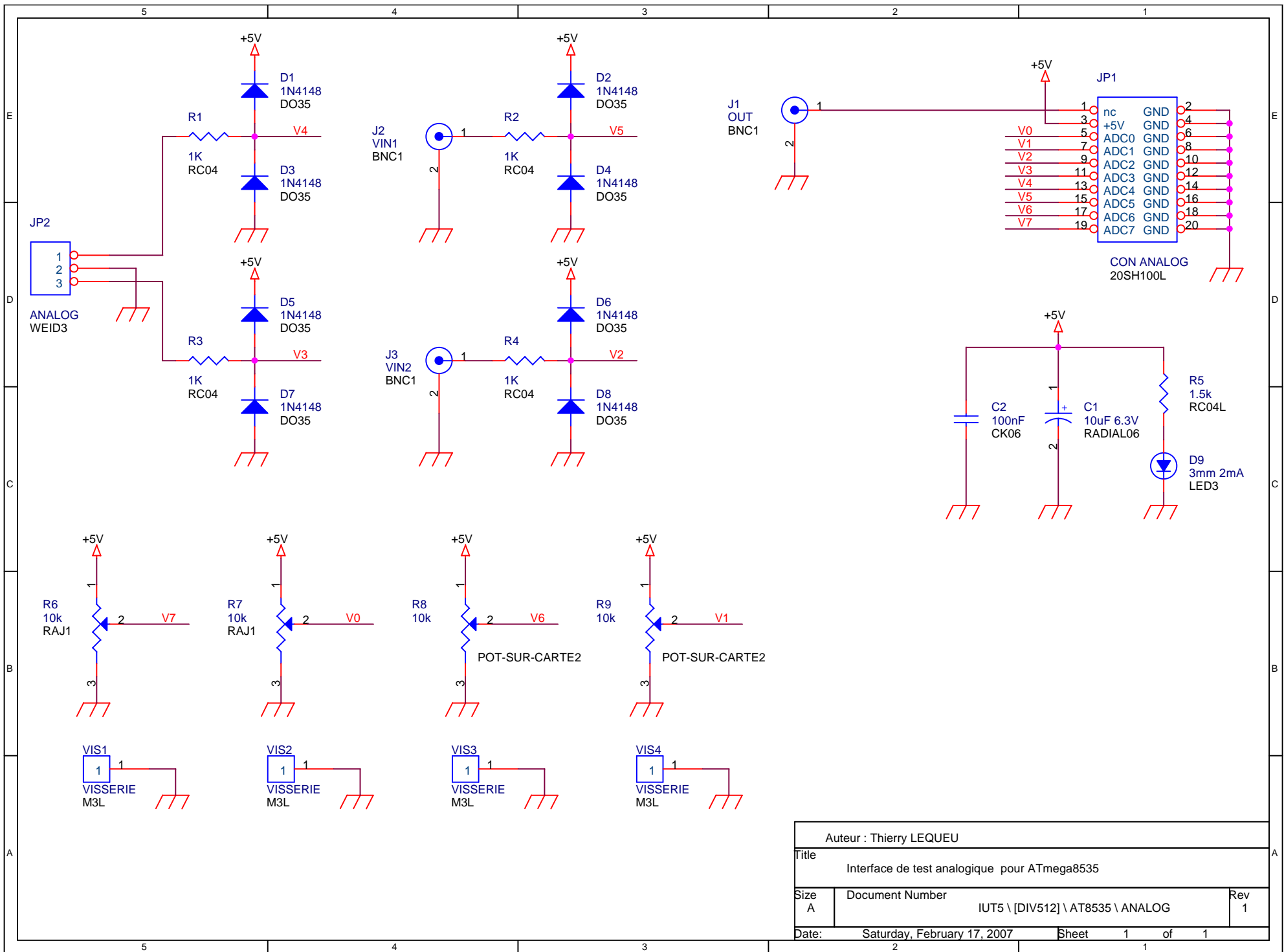


Figure 5.3 Interface analogique de test (images-maquettes\AT8535-ANALOG-12.jpg).

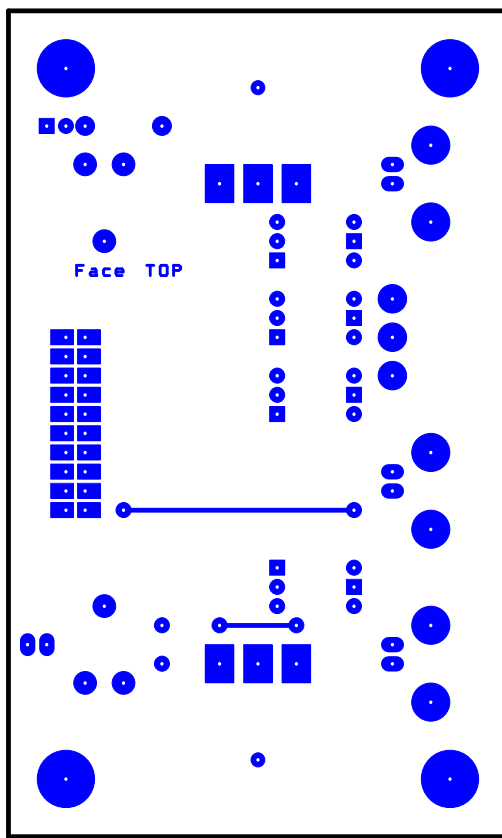
## 5.6 Désignation des composants

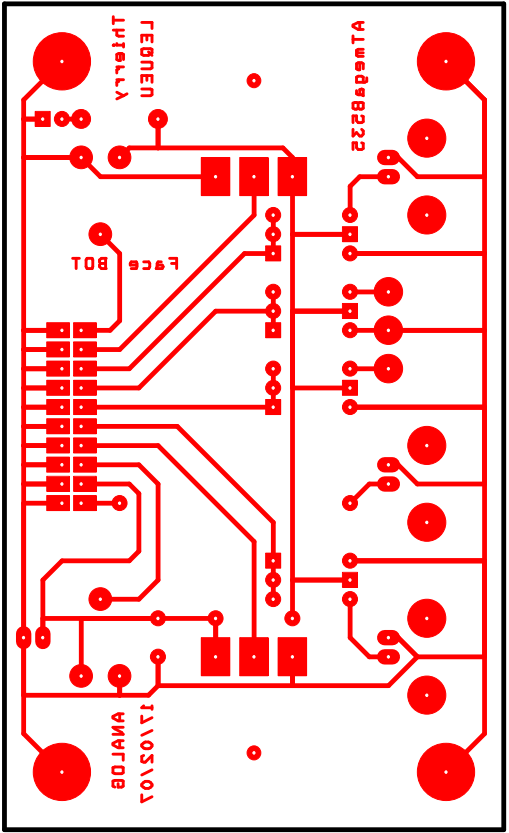
Tableau 5.3. Liste de composants (projets-iut5.xls / AT8535-ANALOG).

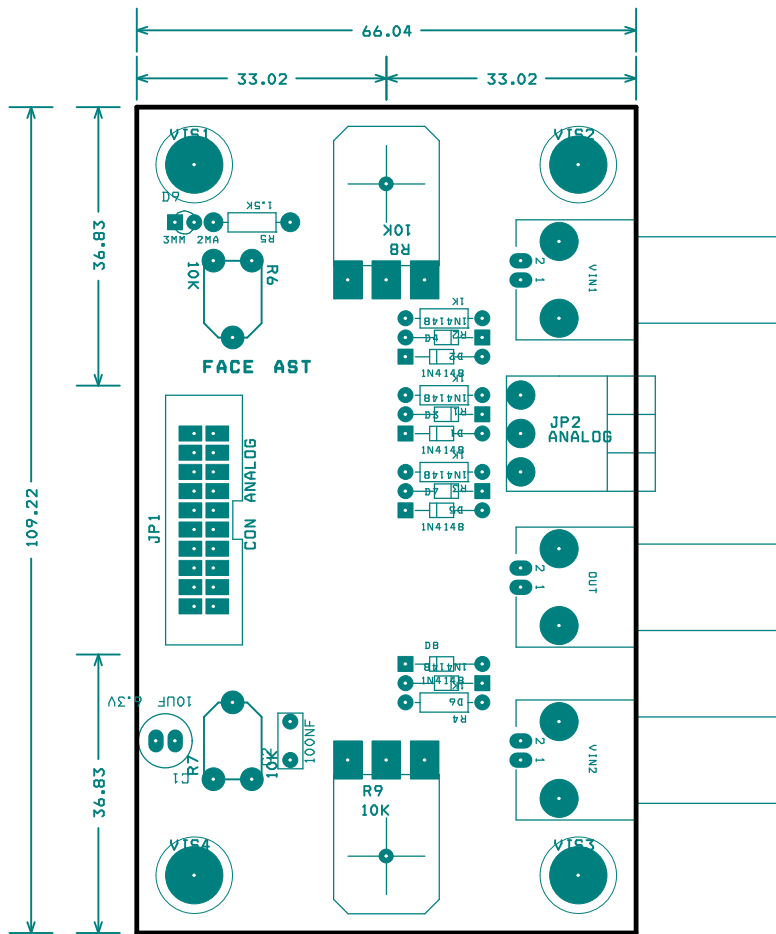
N°	Quantité	Référence	Désignation	Empreinte
1	1	C1	10uF 6.3V	RADIAL06
2	1	C2	100nF	CK06
3	8	D1,D2,D3,D4,D5,D6,D7,D8	1N4148	DO35
4	1	D9	3mm 2mA	LED3
5	1	JP1	CON ANALOG	20SH100L
6	1	JP2	ANALOG	WEID3
7	1	J1	OUT	BNC1
8	1	J2	VIN1	BNC1
9	1	J3	VIN2	BNC1
10	4	R1,R2,R3,R4	1K	RC04
11	1	R5	1.5k	RC04L
12	2	R7,R6	10k	RAJ1
13	2	R8,R9	10k	POT-SUR-CARTE2
14	4	VIS1,VIS2,VIS3,VIS4	VISSERIE	M3L

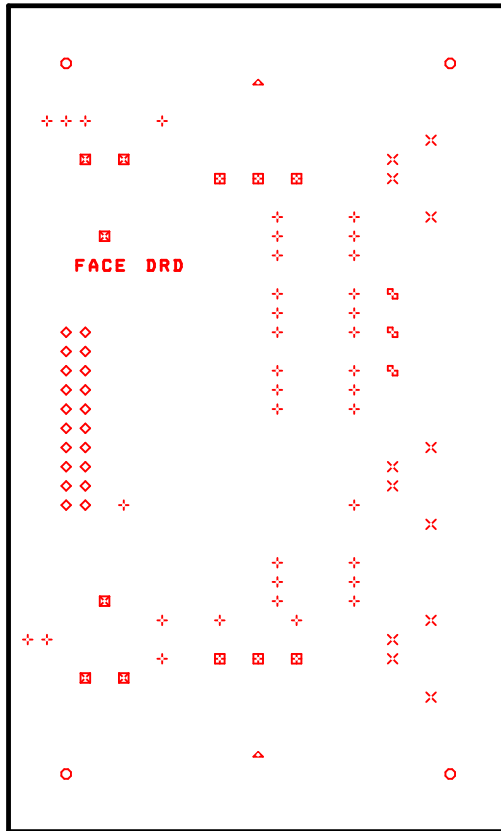


Auteur : Thierry LEQUEU		
Title Interface de test analogique pour ATmega8535		
Size A	Document Number IUT5 \ [DIV512] \ AT8535 \ ANALOG	Rev 1
Date: Saturday, February 17, 2007	Sheet 1	of 1









DRILL CHART				
SYM	DIAM	TOL	QTY	NOTE
x	0.508 mm		12	
+	0.787 mm		36	
◇	1.000 mm		20	
⊠	1.194 mm		6	
⊞	1.499 mm		6	
⊣	1.499 mm		3	
○	3.200 mm		4	
△	10.160 mm		2	
TOTAL			89	