

Projet 9 - TABLCD / Afficheur LCD pour tableau de bord.

Projet : IUT5

Info : [DIV493]

Révision : 2 du 29 janvier 2008

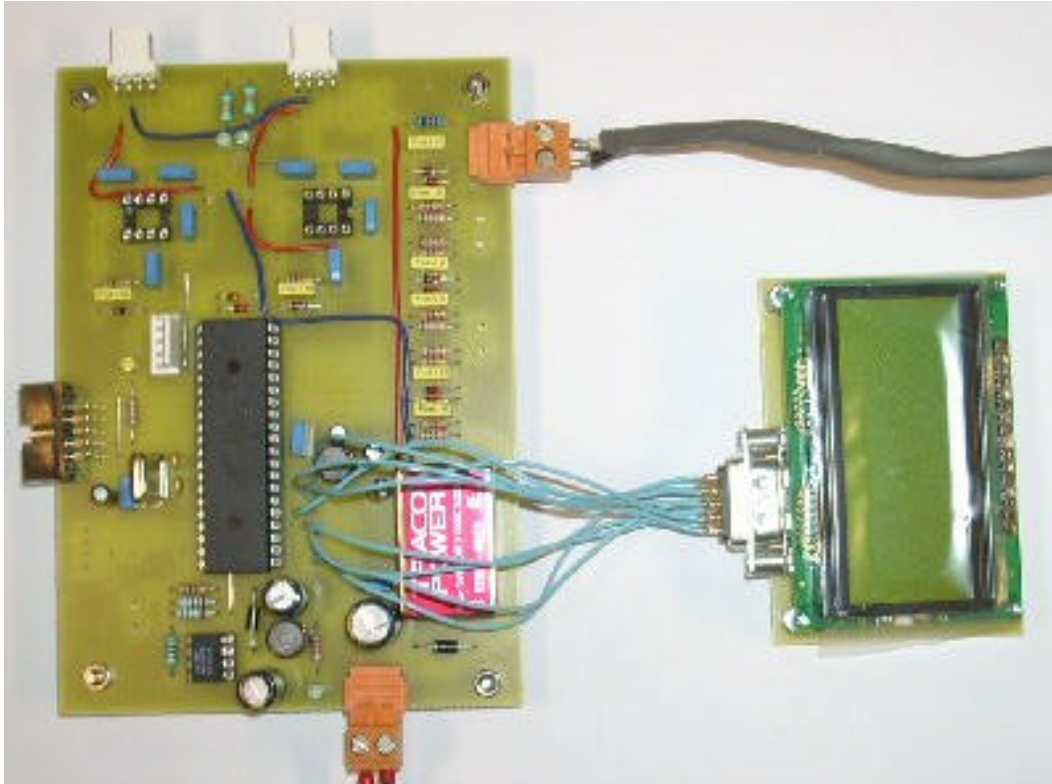
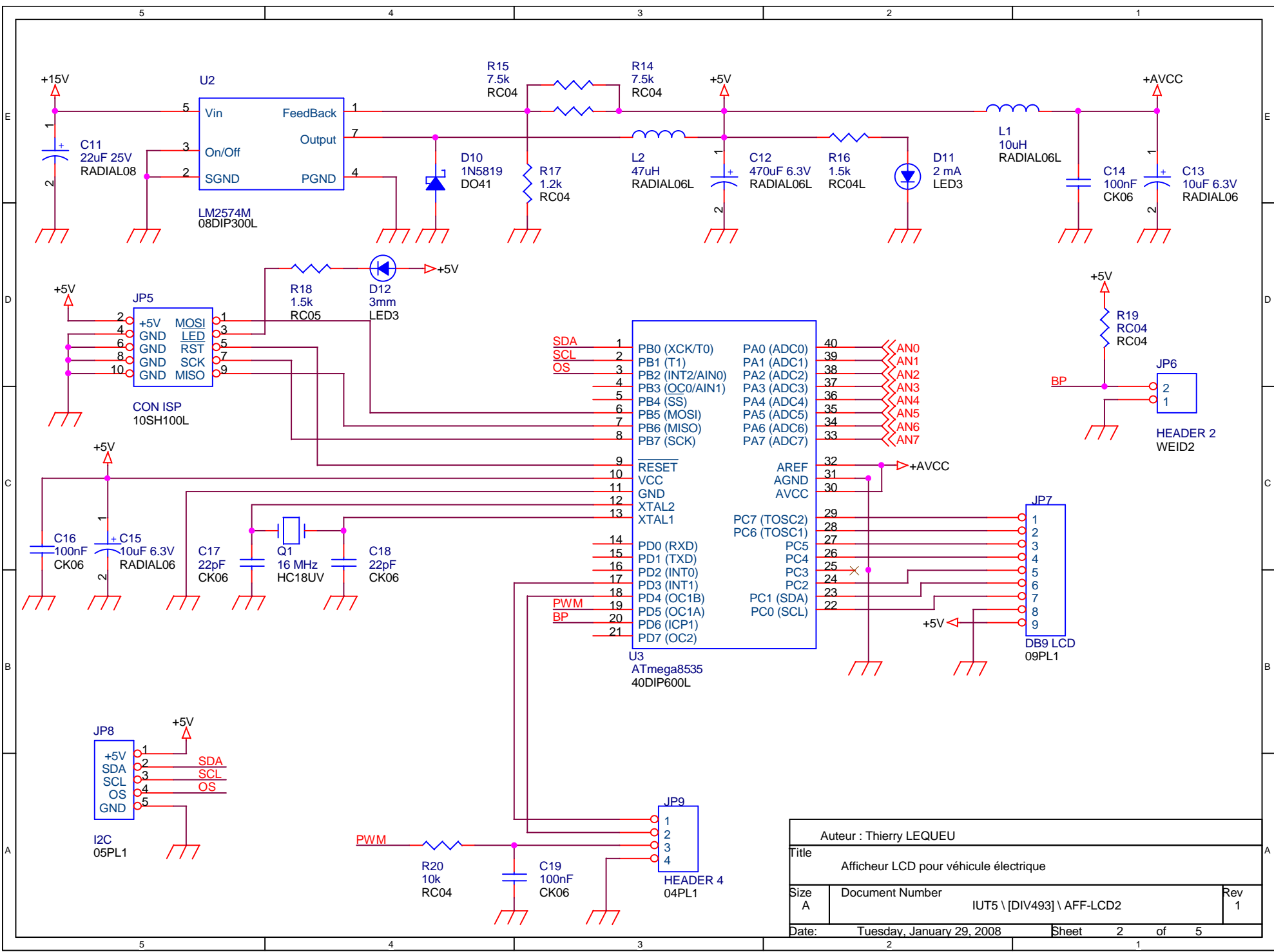


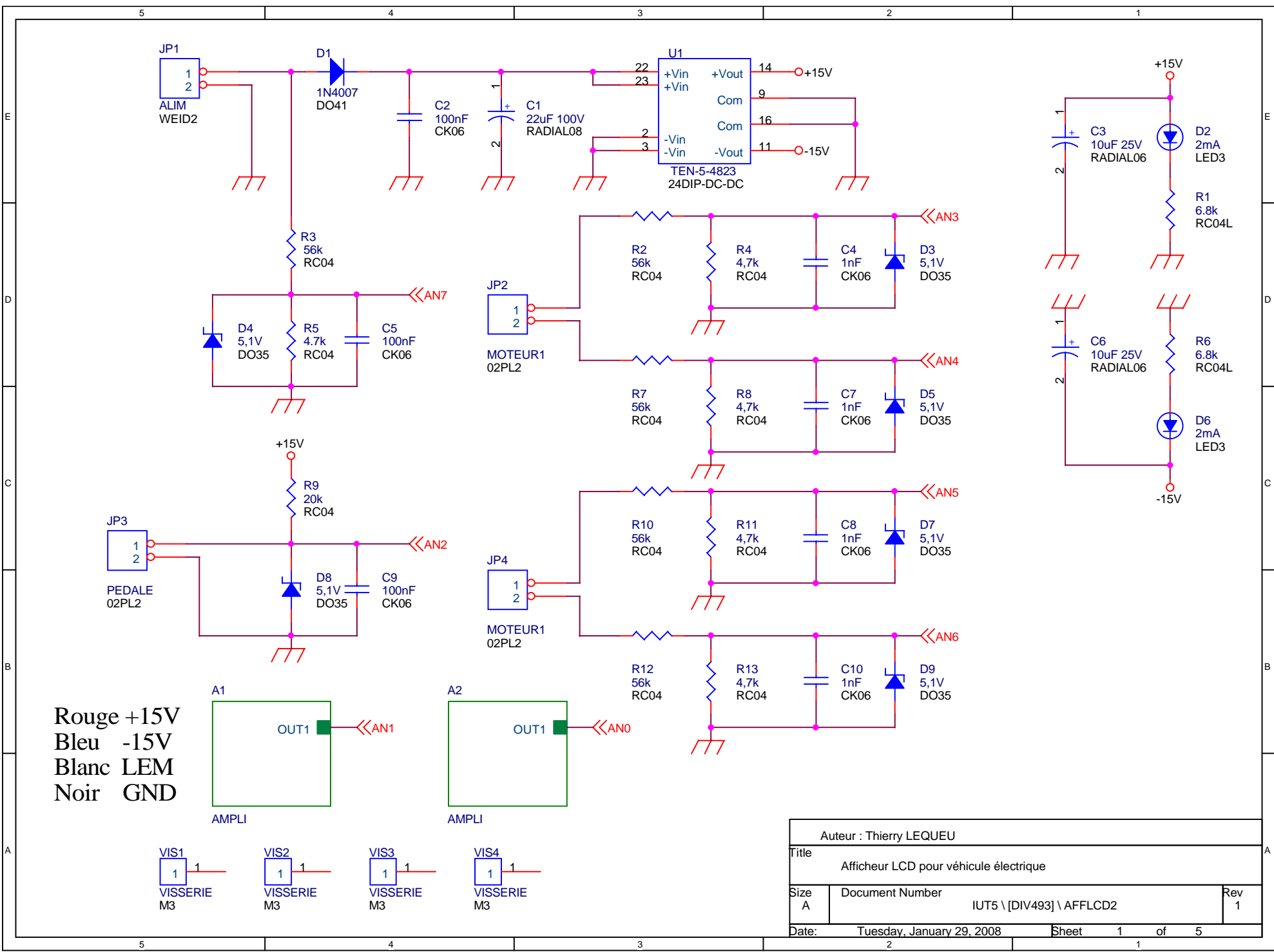
Figure 9.1. Vue de la carte électronique (images-maquettes\AFF-LCD2-22.jpg).

9.1 Liste des documents

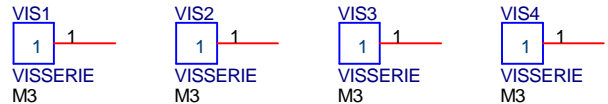
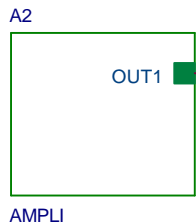
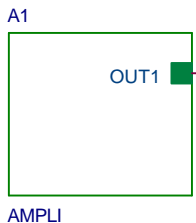
- Désignation des composants
- Prix du montage.
- Schéma électronique.
- Circuit imprimé coté cuivre.
- Circuit imprimé coté composants.
- Implantation des composants.
- Documentations des composants.



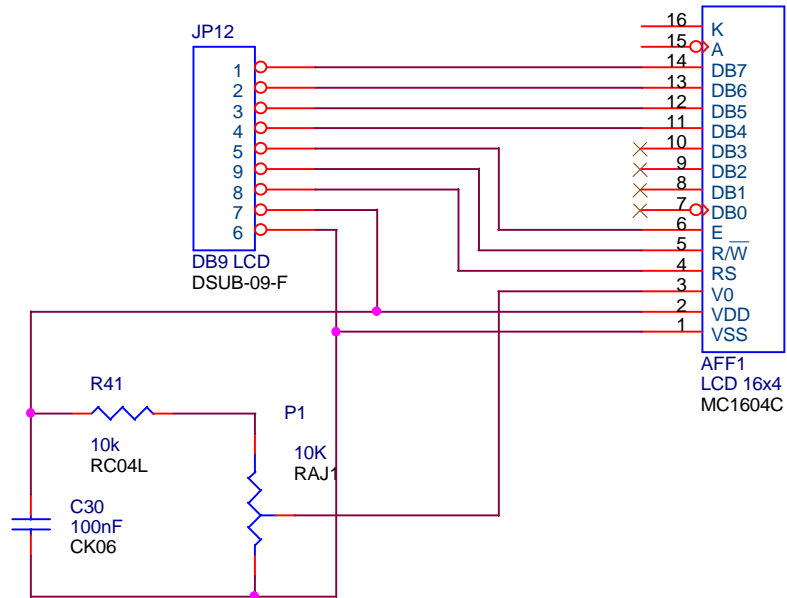
Auteur : Thierry LEQUEU		
Title Afficheur LCD pour véhicule électrique		
Size A	Document Number IUT5 \ [DIV493] \ AFF-LCD2	Rev 1
Date: Tuesday, January 29, 2008	Sheet 2	of 5



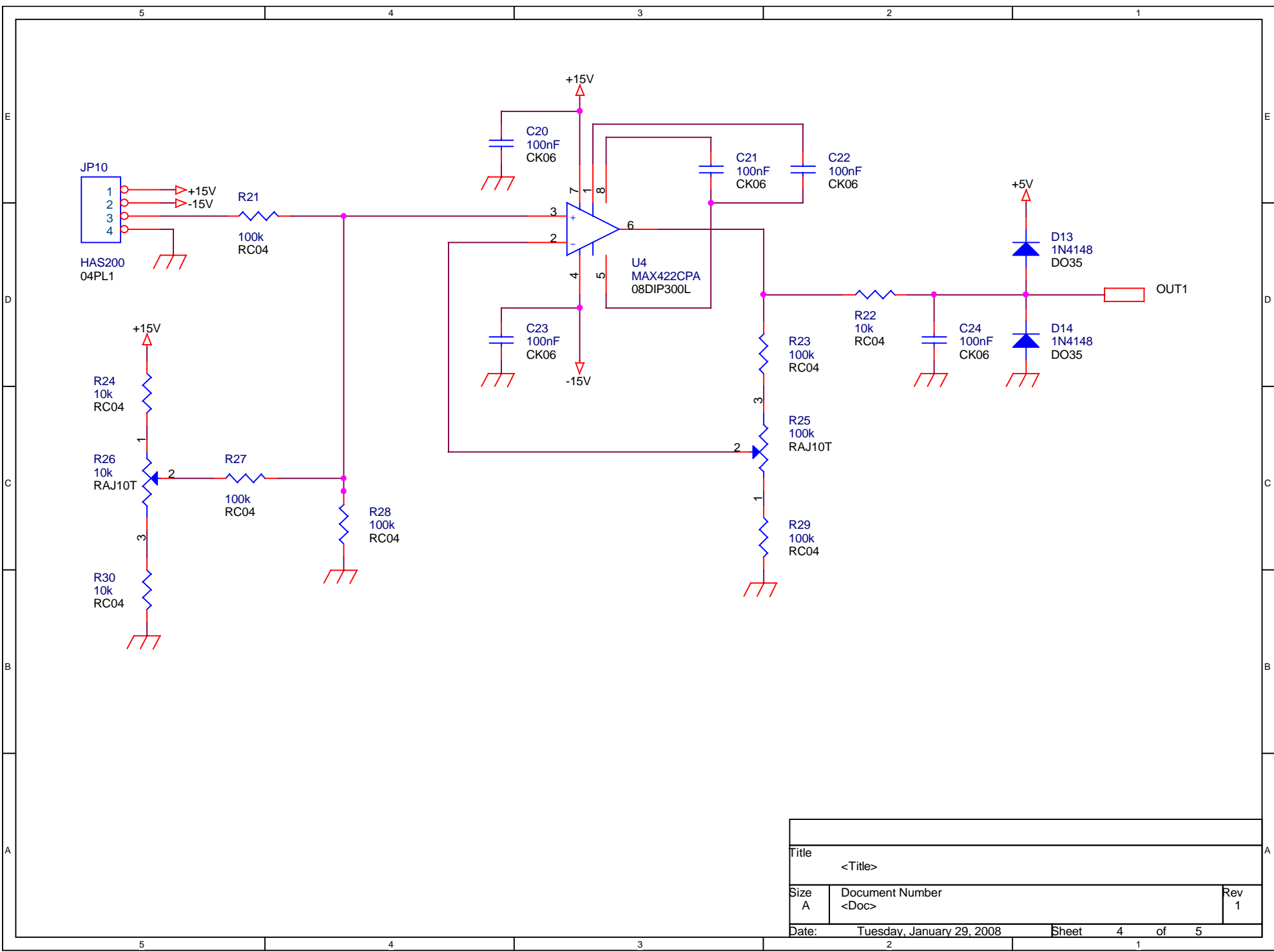
Rouge +15V
 Bleu -15V
 Blanc LEM
 Noir GND



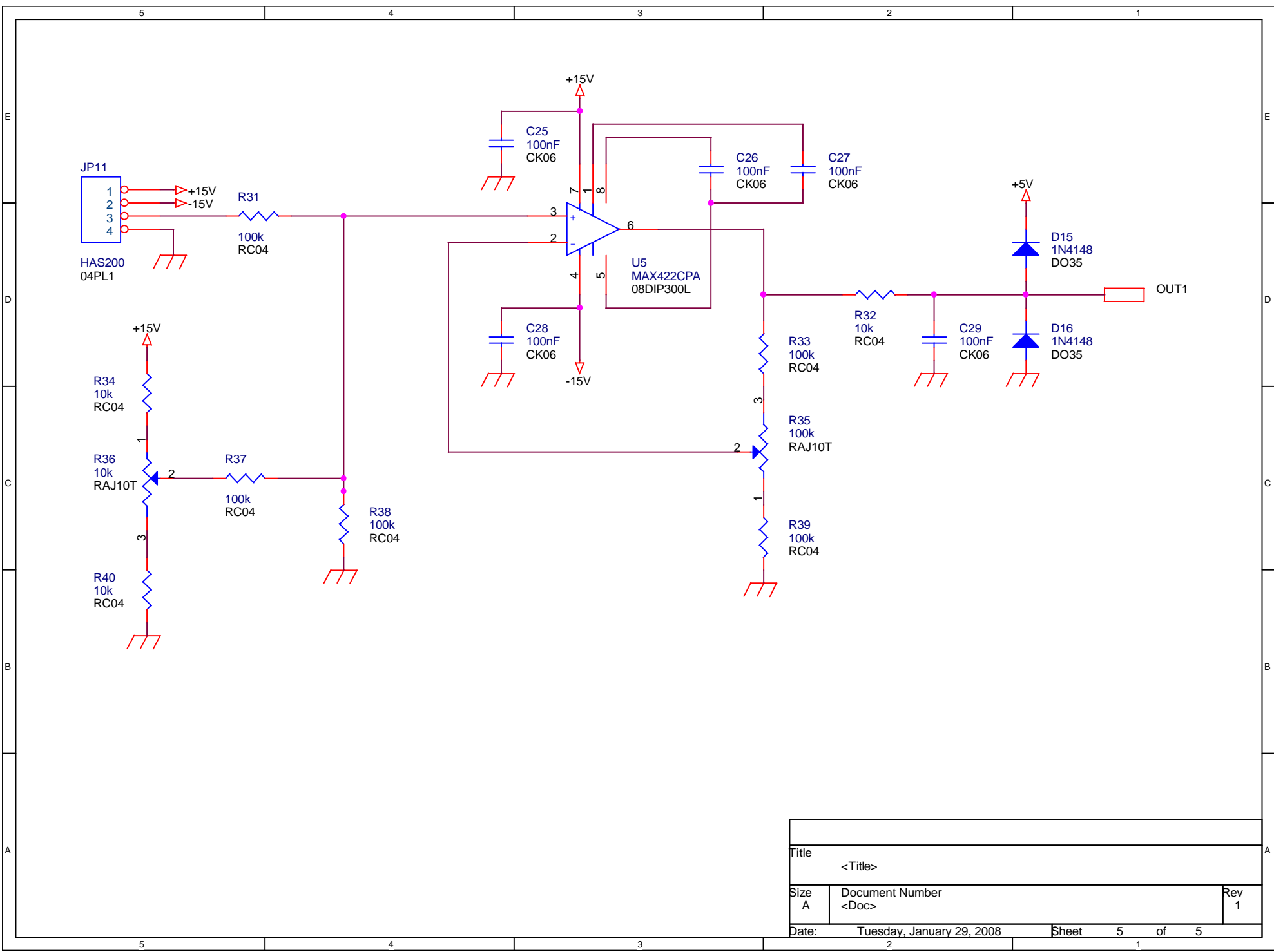
Auteur : Thierry LEQUEU		
Title Afficheur LCD pour véhicule électrique		
Size A	Document Number IUT5 \ [DIV493] \ AFFLCD2	Rev 1
Date: Tuesday, January 29, 2008	Sheet 1	of 5



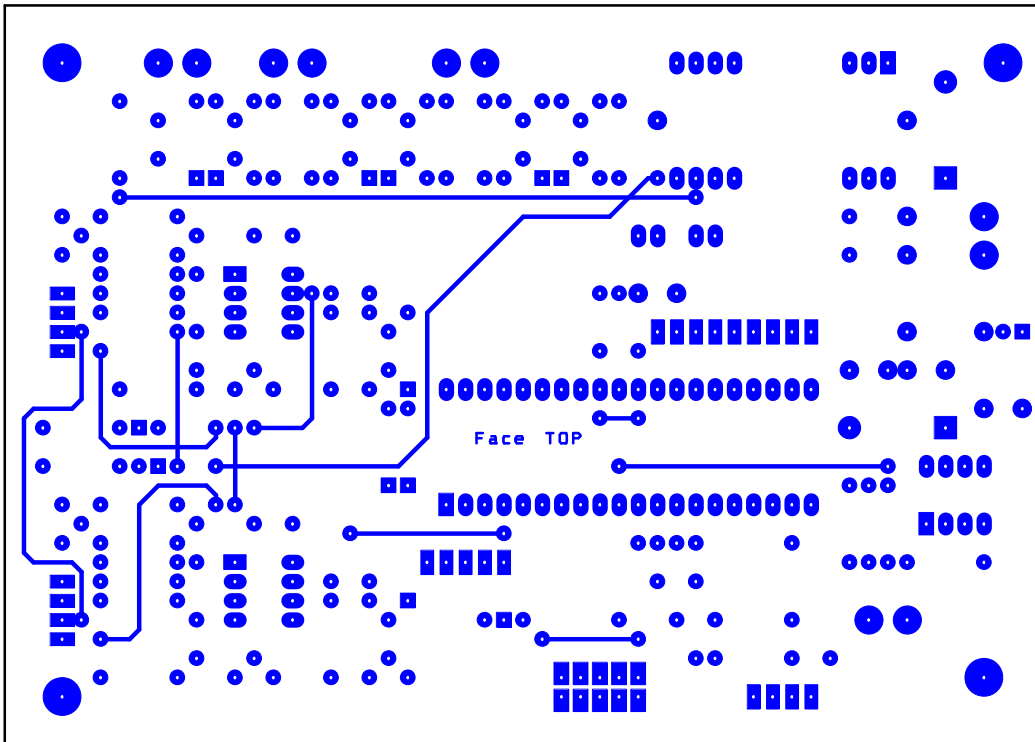
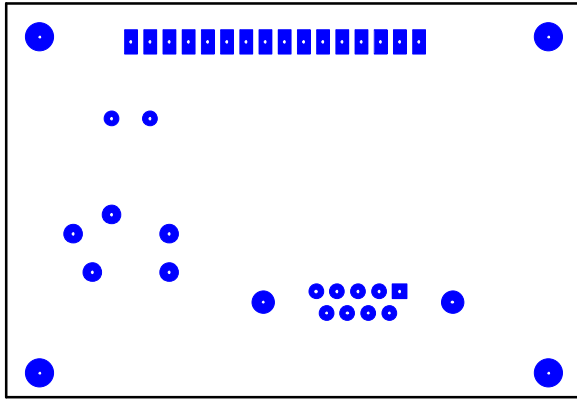
Auteur : Thierry LEQUEU		
Title Afficheur LCD pour véhicule électrique		
Size A	Document Number IUT5 \ [DIV493] \ AFFLCD2	Rev 1
Date:	Tuesday, January 29, 2008	Sheet 3 of 5

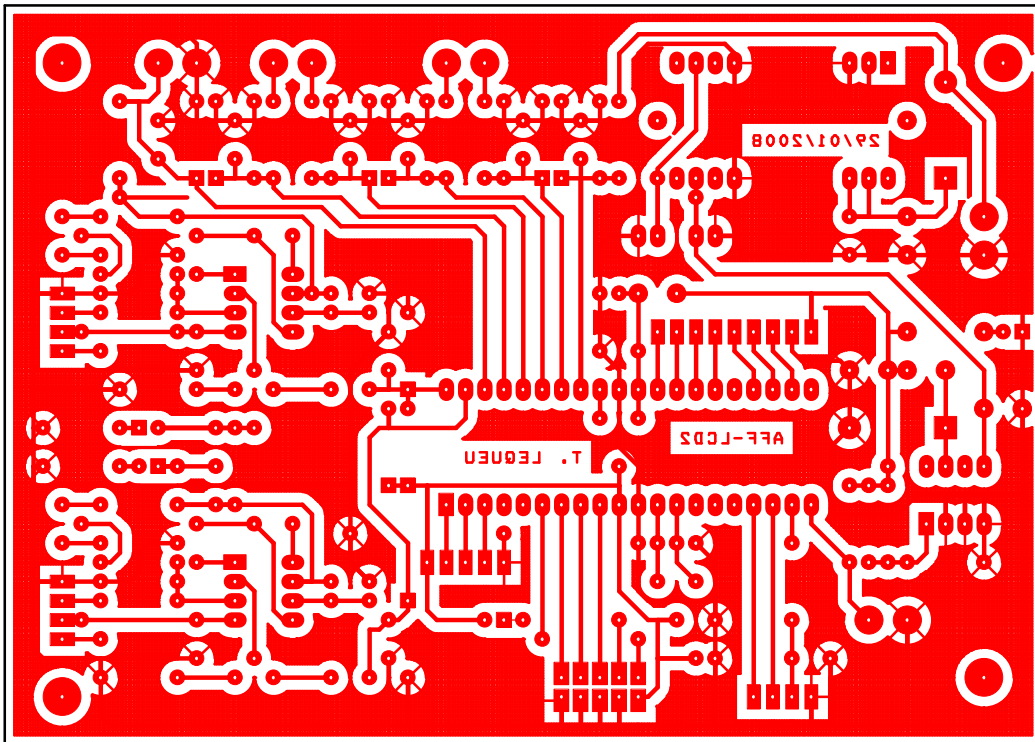
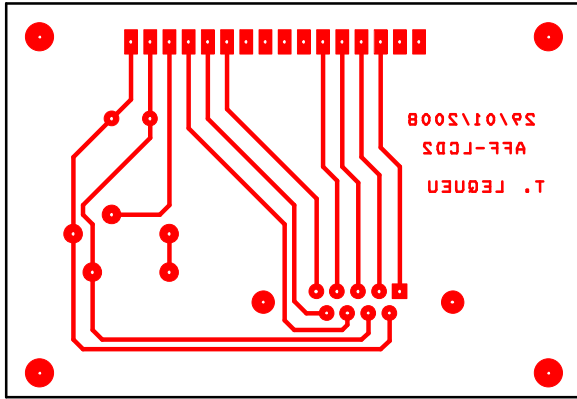


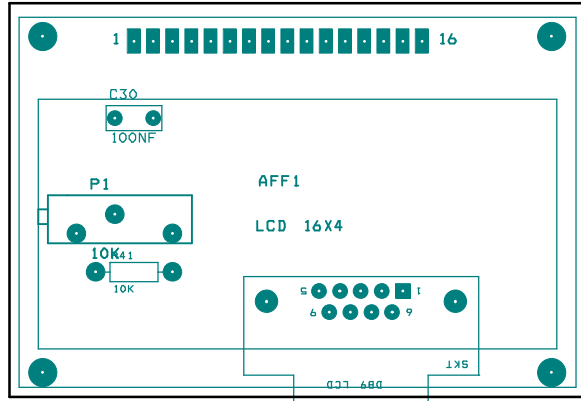
Title		
<Title>		
Size	Document Number	Rev
A	<Doc>	1
Date:	Tuesday, January 29, 2008	Sheet 4 of 5



Title		
<Title>		
Size	Document Number	Rev
A	<Doc>	1
Date:	Tuesday, January 29, 2008	Sheet 5 of 5

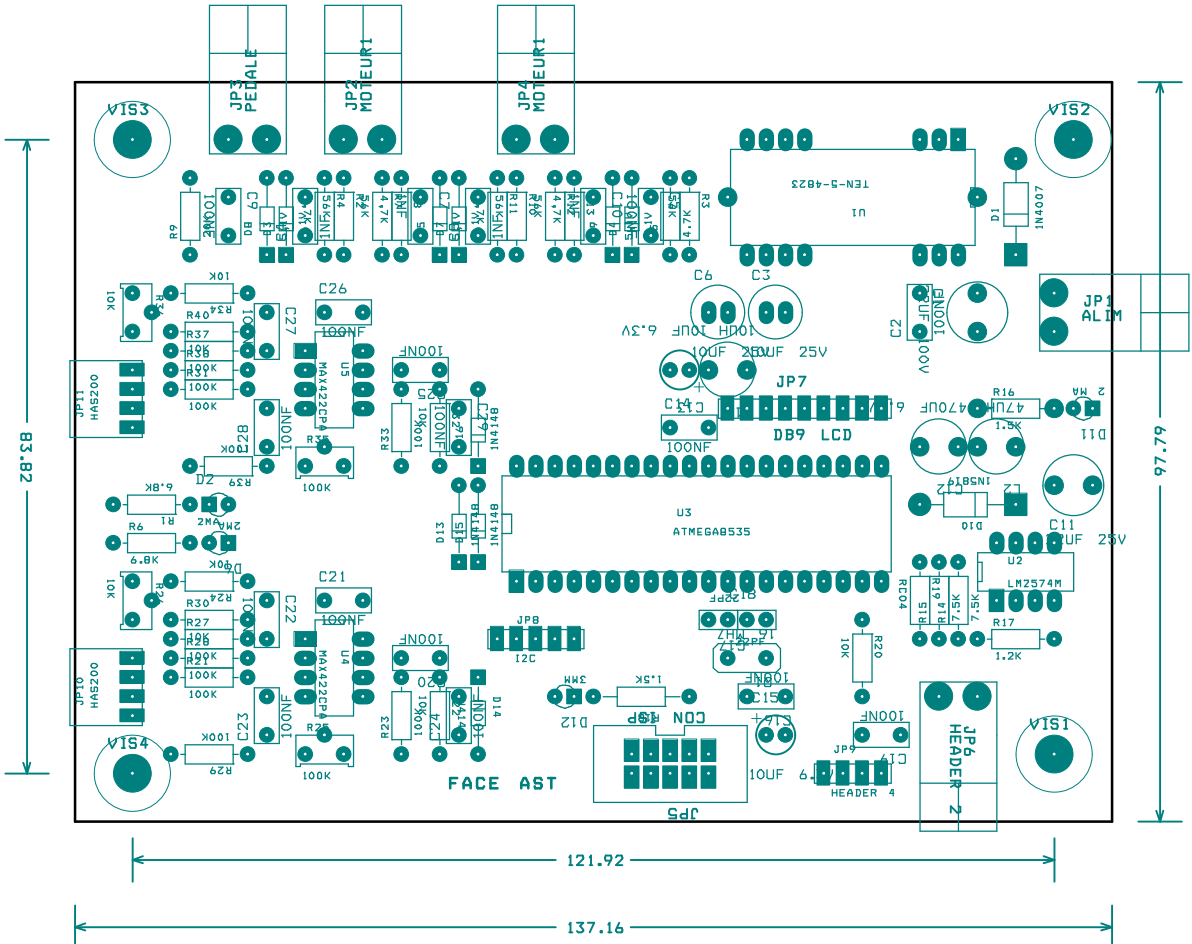






52.07

76.20

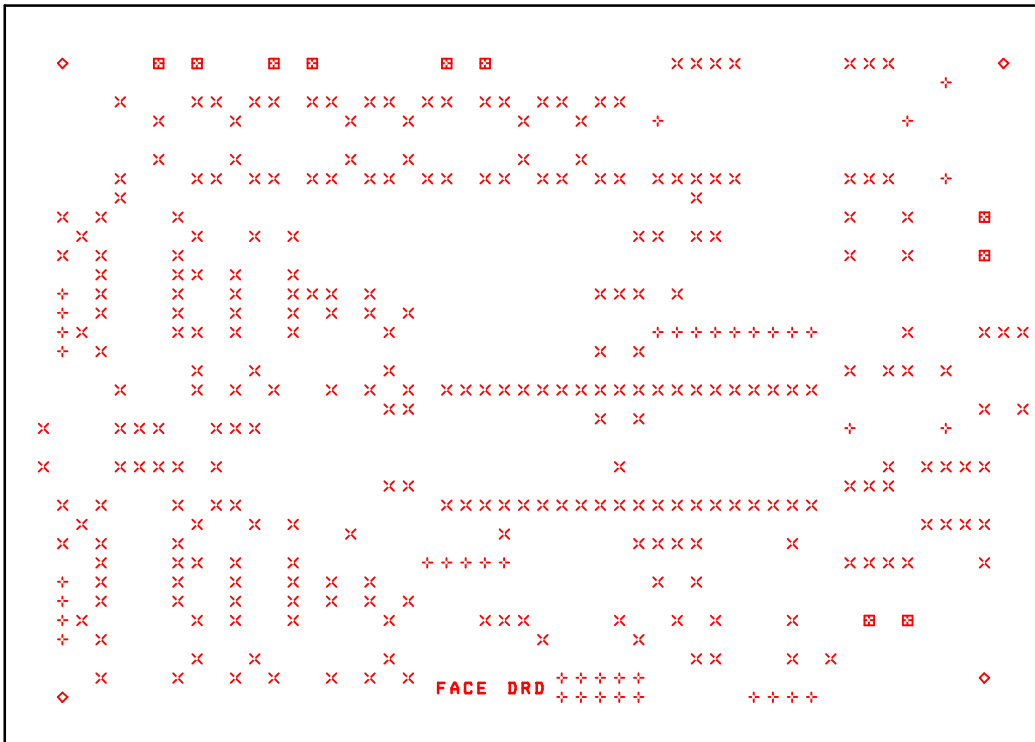
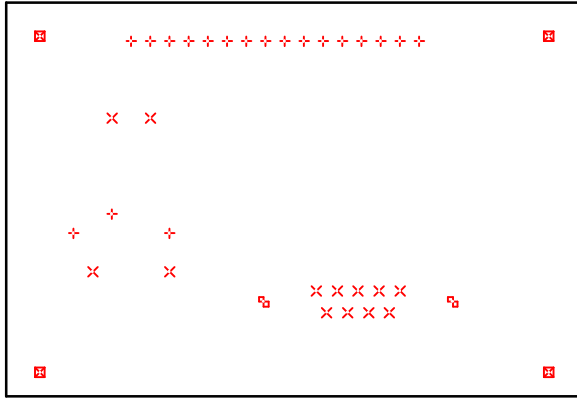


97.79

83.82

121.92

137.16



DRILL CHART				
SYM	DIAM	TOL	QTY	NOTE
x	0.787 mm		291	
+	0.991 mm		61	
田	1.194 mm		4	
◇	1.499 mm		4	
卍	1.499 mm		10	
卍	3.048 mm		2	
TOTAL			372	